



**WI-PS309GF**  
**10-Port 48V Gigabit Ports PoE Switch**  
**with 8-Port PoE**  
**Data sheet**

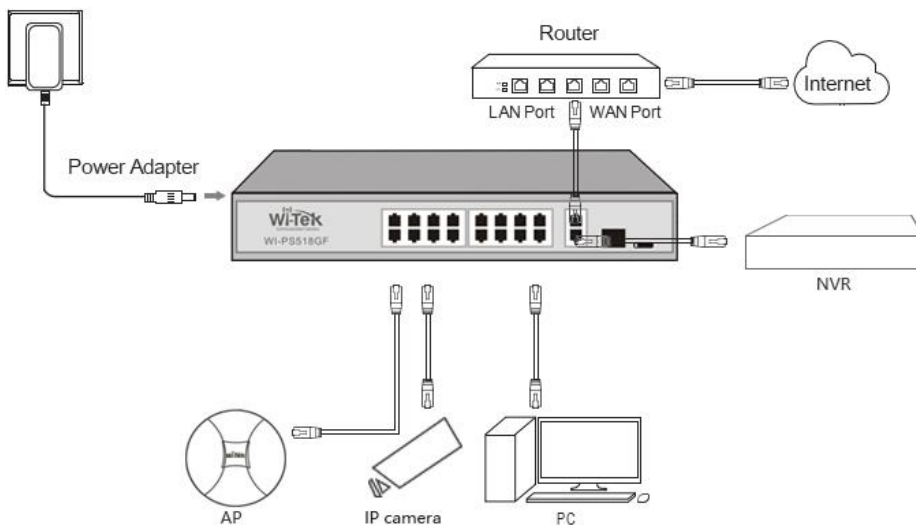
## Highlights

- 8 Gigabit Ports and 1 Gigabit combo SFP PoE Switch with 8-Port PoE ports
- Supports PoE power up to 30W for each port
- Supports PoE IEEE 802.3af/at compliant PDs
- Internal power adapter supply 150W output power
- LED indicators for LINK/ACT, Power, PoE Status, 100/1000Mbps
- 4K entry MAC address table with auto-learning and auto-aging

## Product



## Typical Applications





## Description

### What This Product Does

8-Port Gigabit Switch and 1 combo SFP PoE switch with 8-Port PoE provides the seamless network connection. It integrates 1000Mbps Gigabit Ethernet and 10/100Mbps Fast Ethernet network capabilities.

### How This Product Works

8 Auto-Negotiation RJ45 ports (port-1 to port-8) of the switch support Power over Ethernet (PoE) function. These PoE ports can automatically detect and supply power with those IEEE 802.3af/at compliant Powered Devices (PDs). In this situation, the electrical power is transmitted along with data in one single cable allowing you to expand your network where there are no power lines or outlets, where you wish to fix devices

such as APs, IP Cameras or IP Phones, etc.

## **Easy To Use**

WI-PS30GF is easy to install and use. It requires no configuration and installation. With outstanding performance and quality, the WI-PS309GF Gigabit Desktop Switch with 8-Port PoE is a great selection for expanding your home or office network.

## **Specifications**

HARDWARE FEATURES	
Interface	8 1000Mbps RJ45 POE Ports 1 1000Mbps Combo SFP Port
Network Media	10Base-T: Pair 2 Category 3(cat 3) and above UTP/STP(≤100m) 100Base-TX: Pair 2 Category 5(cat 5) and above UTP/STP(≤100m) 1000BASE-TX: 6 Category and above UTP(≤150m)
Fan Quantity	Fanless
Power Budget	150W
Internal Power Supply	AC 110~240V 50/60HZ
PoE Ports (RJ45)	Standard: 802.3 af/at compliant PoE Ports: Port1- Port8 Power Supply: 150W
Exchange Capacity	20G
Mac Address Table	4K
Packet Forwarding Rate	14.9Mpps
Buffer	1.5Mb
Jumbo Frame	10240Bytes

<b>Dimensions</b>	Product Size: 210mm*140mm*45mm (L*W*H)
<b>Protection Leve</b>	Lightning protection 6KV 6KV ESD Contact discharge

## SOFTWARE FEATURES

<b>Transmission Method</b>	Store-And-Forward
<b>Advanced Functions</b>	Priority Function Mac Address Auto-Learning And Auto-Aging Store and forward IEEE 802.3x flow control for Full-duplex Mode Backpressure for Half-duplex Mode

## OTHERS

<b>Certification</b>	CE, FCC, RoHS
<b>Package Contents</b>	POE Switch Electric Line Guide Book/Warranty Card
<b>Environment</b>	Operating Temperature: -10°C~55°C