



H90 Dual 2K+ & 2K+

Dual-Lens Pan & Tilt Wi-Fi Camera

Dual cameras, dual rotations

Another innovation in the EZVIZ star range of dual-lens cameras, the H90 Dual is taking 360-degree protection to a whole new level by combining two rotating lenses in a single housing. Its orb-shaped camera inherits the beloved features from EZVIZ's pan/tilt series, and its UFO-shaped top camera adds another sweeping, ultra-wide field of view to leave no corner unwatched. The two boast additional smartness by responding to each other to complete interlinked detection and view change. In short, the H90 Dual provides unparalleled vision and efficiency for large-area monitoring.



2K+ & 2K+
Dual Lenses



Dual Rotations
for Ultra-Flexible
Vision



Co-Detection
for Auto Smart
Tracking



One-Tap Control
for Linked View
Change



Two Patrol Modes
for Auto-Security



360° Panoramic
View



AI-Powered Human
/ Vehicle Shape
Detection



Active Defense
with Siren &
Strobe Light



Color
Night Vision



Balanced Image Exposure
with Smart Lights



Two-Way Talk



H.265 Video
Compression



Weatherproof
Design



Easy Installation



Smart Integration
with Google Assistant
& Amazon Alexa¹

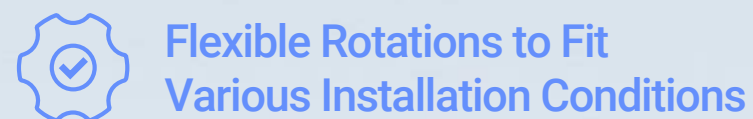
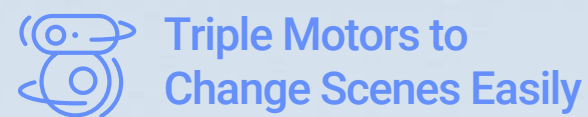


Supports MicroSD
Card (Up to 512 GB) &
EZVIZ CloudPlay Storage²



Smart robotic power doubled in one

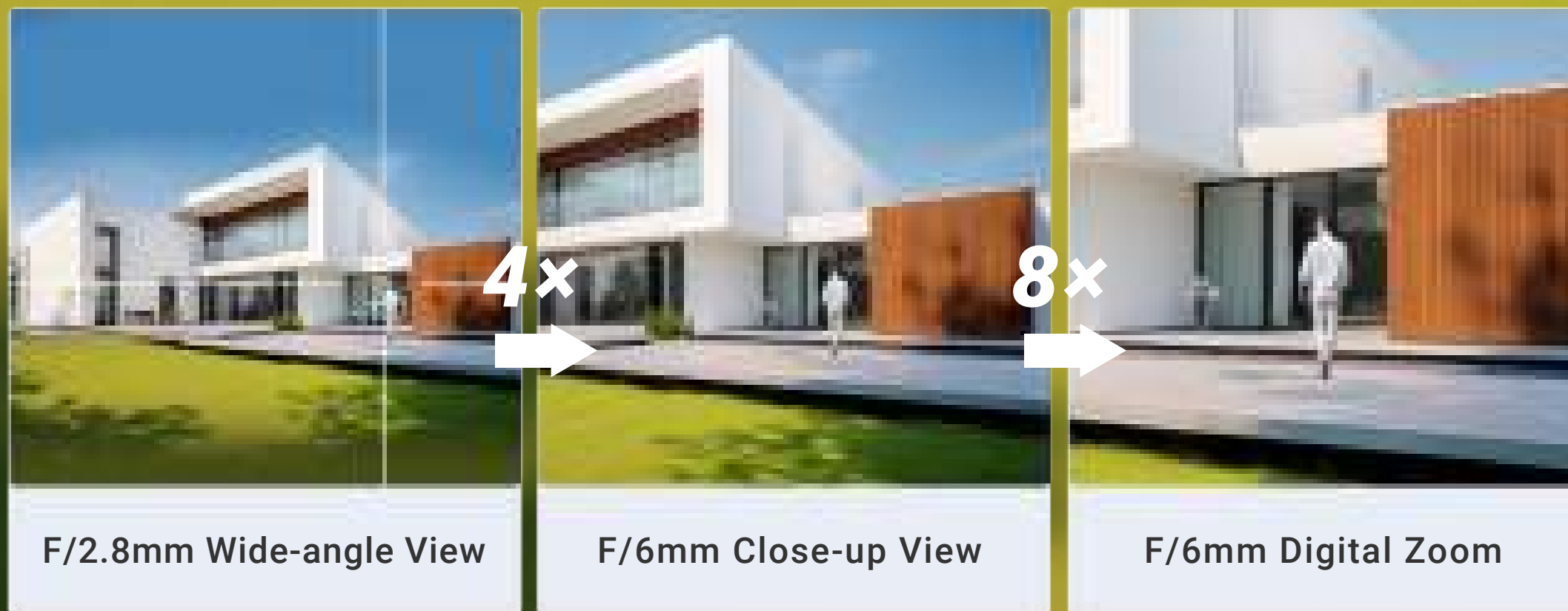
Equipped with the EZVIZ's dual-lens technology, the H90 Dual unprecedentedly uses three motors to ensure both cameras can smoothly swirl to reduce blind spots as much as possible. This two-camera system can secure two separate, wide areas simultaneously, or record the same activity with far more details.



Big and small, all truthfully captured in 2K+ resolution

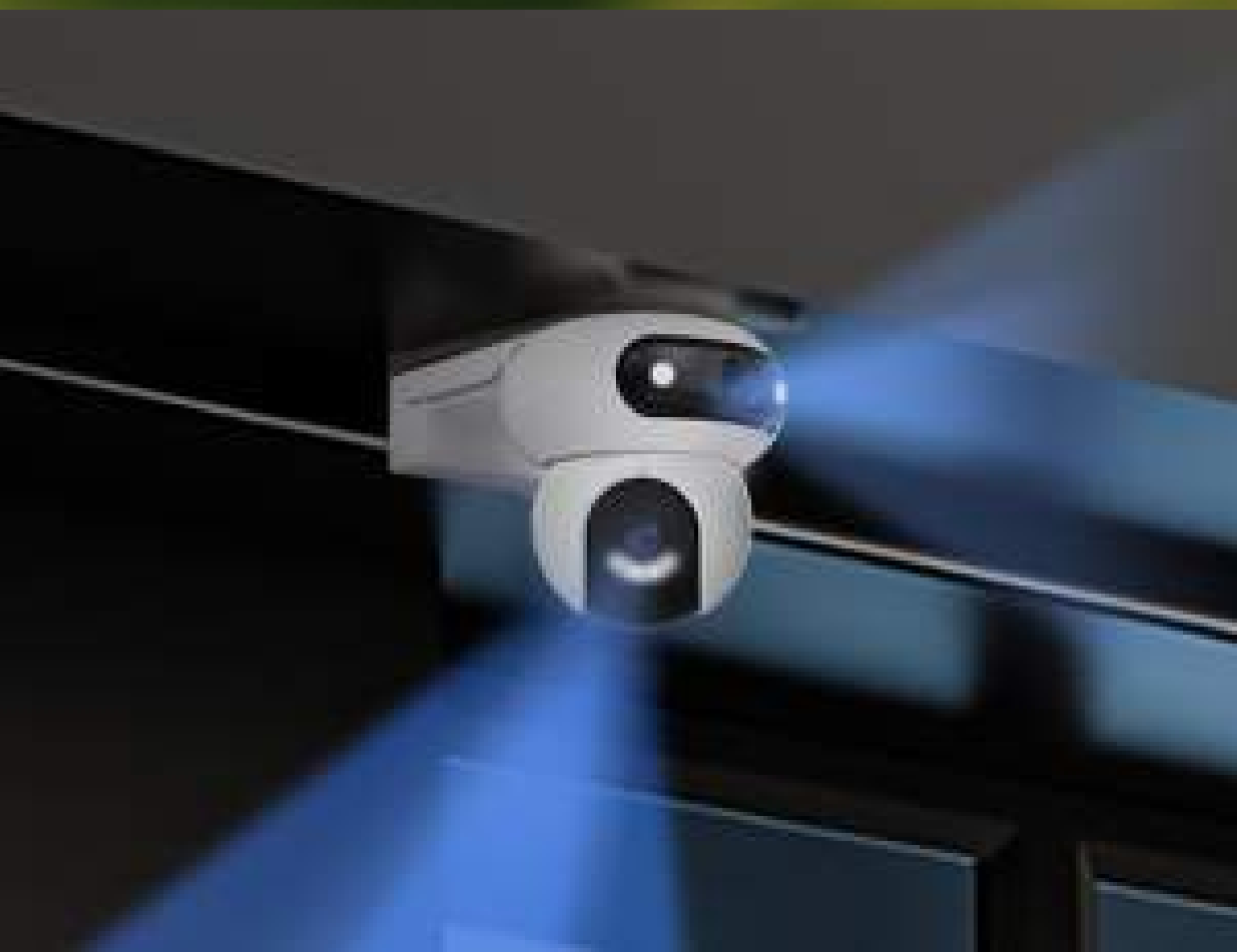
Let the H90 Dual enhance your sight to see both far and nearby, so you don't skip anything important. You can adjust the upper lens to keep a continuous watch on the big picture of a key area, and use the lower lens to secure what matters to you most.





Click to check, with both wide and close-up views

Understand the whole, big picture while paying attention to the important details, by using the EZVIZ App. You can tap the area of interest on the wide-angle viewing box, so a close-up view will be shown on the side at the same time.



Co-action technology ready for a complex activity

Unlike most dual-lens cameras in the market that only stitch the views of two lenses, the H90 Dual is smart enough to complete a complicated detection activity by involving two lenses at the same time.

Co-Detection for Auto Smart Tracking



Step 1

The top lens detects a moving person in its ultra-wide 110° view



Step 2

The bottom lens rotates and follows the moving person


Fully-automated rotation for extended peace of mind


On set time intervals, the lower lens can complete rotational check-ups to eliminate blind spots. You can customize patrol routes for tailored focuses, or simply ask it to complete a full-circle spin.



Smarter alerts on the comes and goes

In addition to capturing human activities with a wealth of information, the H90 Dual recognizes the shape of a car from other moving objects. If your family member pulls up in front of your driveway or someone parks in your detected area, you will be notified immediately.

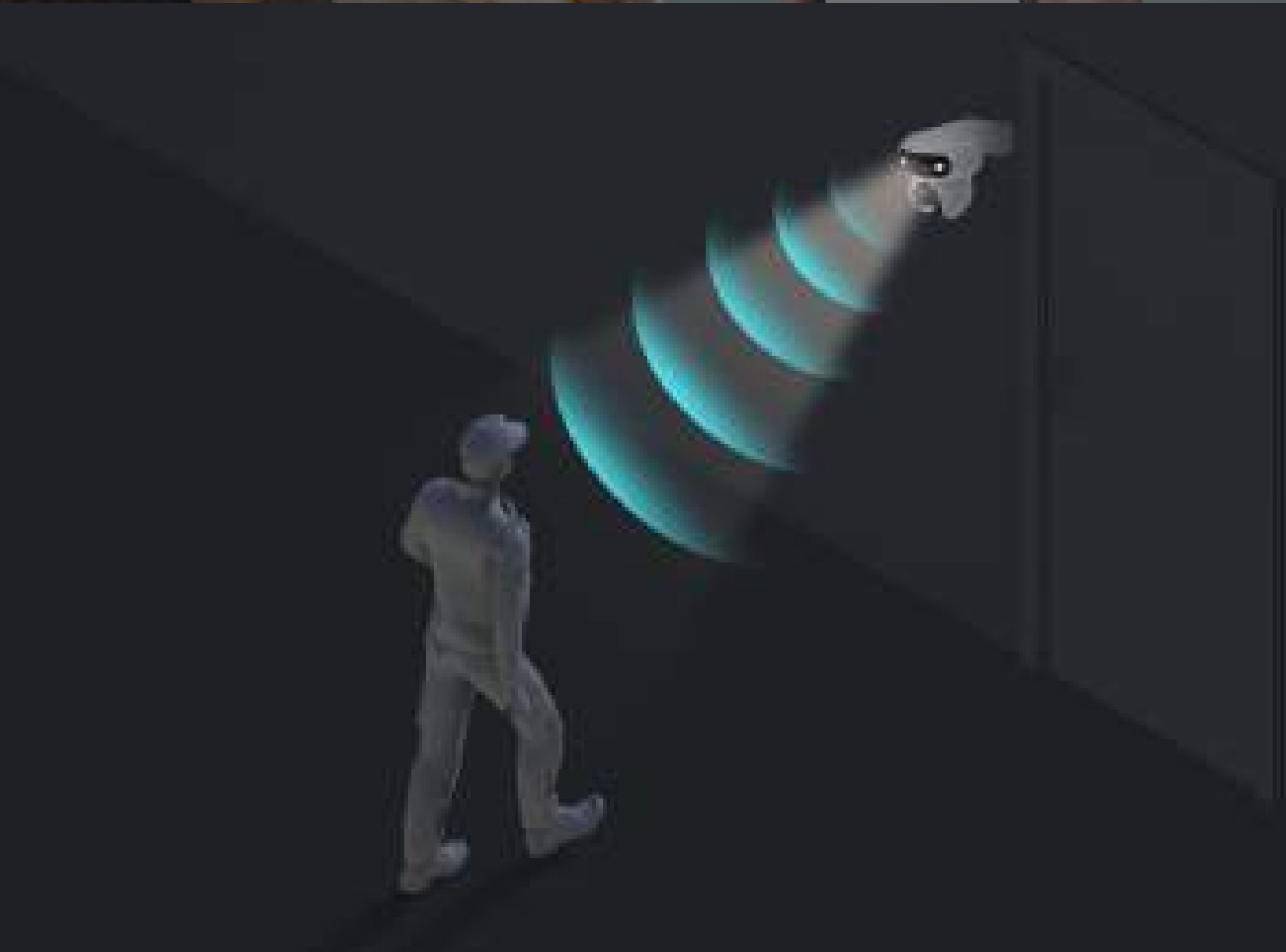
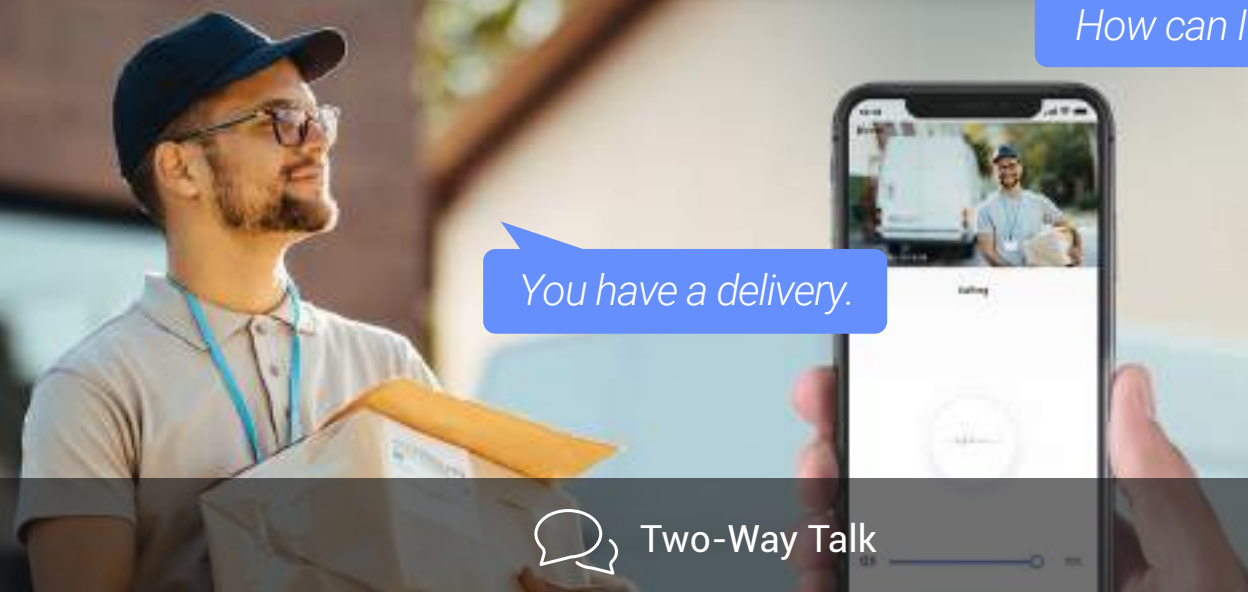
 AI-Powered Human Shape Detection (On both lenses)

 AI-Powered Vehicle Shape Detection (On both lenses)

FREE No Subscription Fee

Communications can be this easy

Enjoy two-way audio by simply using your smartphone. Or, pre-record a 10-second voice message that automatically plays upon human motion detection.



A vigilant guard who works around the clock

The H90 Dual integrates EZVIZ's beloved active defense function to provide an extra layer of protection. Upon detection of intruders, the camera will set off a loud siren and flash spotlights to warn them away.

Smart adaptation for even and clear images

Wherever you install the H90 Dual camera, it manages to comprehend the surrounding light to automatically create an evenly exposed, clear image, even in the dark. Users can choose to enable the "Balanced Image Exposure" option via the EZVIZ App at any time, regardless of which night vision mode the camera is in.



Smartly reduces brightness to avoid overexposure



Automatically boosts image gain to see dark details



For open area



For edges & corners



Without adaptative smart light

With adaptative smart light

VS

Designed to make protection last all night

01

Far-reaching color night vision

With its F1.6 large-aperture lens and four built-in spotlights, the H90 Dual provides full-color night vision within an impressive range of up to 40 meters.⁴ Nothing will easily escape your sight despite the cover of darkness.



02

Three night vision modes at your choice

Full-color mode

Enable the spotlights to illuminate a completely dark environment for vivid details throughout the night.

Black-and-white mode

Use the infrared night vision if you don't want the strong lighting to disturb your neighbors.

Smart mode

Or, let the camera decide. A detected motion will trigger it to switch on the lights automatically.



A durable design with versatile setups

Designed to satisfy security demands under various scenarios, the H90 Dual can easily find its best location to deliver steady, reliable performance even in rain or snow.



Easy Installation with Flexible Mounting Accessories

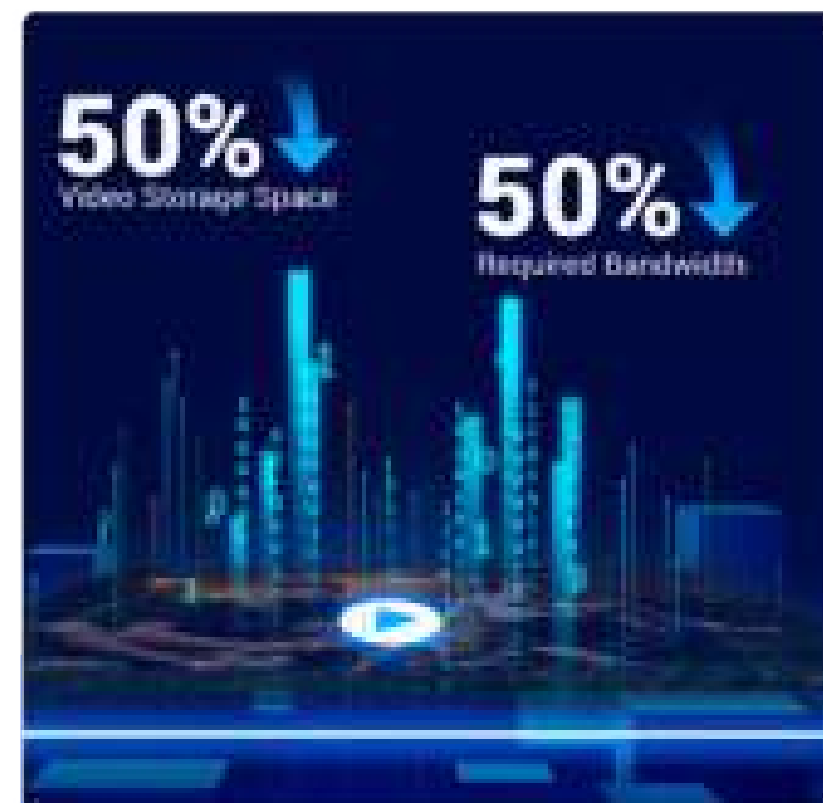


Weatherproof Design



Powerful antennas, stable connection

It boosts up to 220 m Wi-Fi coverage thanks to its high-performance dual antennas.⁵ It also offers wired options for further convenience.



H.265 for enhanced video experience

The H.265 creates a smoother viewing experience while only using about 50% of the data storage space required by cameras with H.264.⁶



Dual storage options for important moments

The camera automatically saves detection-triggered history videos. You can choose to secure them on a large local storage card, or simply by subscribing to the EZVIZ CloudPlay.²



Smart integration for hands-free control

The camera supports easy integration to your existing voice assistants. You can pull up the video feed by simply saying "Alexa" or "Hey Google".¹

We're committed to protecting with trust

We put security as the primary goal of every product and system that we build, and assiduously improve our practices to better protect your device, data and privacy.

[Learn more about our security practices >](#)



*End-to-end
Data Encryption*

AES
Data Encryption

TLS
*Data Transmission
Encryption*

Our global certifications in the fields of **information security, privacy information security, and cloud security**



1 Amazon Alexa and Google Assistant are not available in certain languages and countries.

2 Local storage cards must be purchased separately. Cloud storage service is only available in certain markets. Please verify availability before making a purchase.

3 Please note that the tilt function of the upper lens cannot be controlled remotely via the EZVIZ App. The total tilt angle of the upper lens can reach 20-30 degrees, which is calculated based on the following camera setup: the lens itself is designed with a 20° fixed tilt, and offers a manual tilt adjustment that allows it to be moved an additional 10° vertically.

4 If the two lenses point in the same direction, the maximum color night vision range is 40 meters. If this is not the case, the maximum distance is 30 meters, based on EZVIZ Lab test results under standard conditions.

5 Data from EZVIZ Lab's test results in open environment. Will vary with the Wi-Fi frequency, camera location, the transfer technology, and other environmental factors.

6 Data from EZVIZ Lab's test results under standard conditions. The video compression efficiency will vary with the frequency and complexity of the activity captured, as well as other environmental factors.

Specifications CS-H90-R100-8H44WKFL

Camera

Image Sensor	1/3" Progressive Scan CMOS
Shutter Speed	Self-adaptive shutter
Lens	Top Lens: 2.8mm @ F1.6, Field of view: Diagonal 110°, Horizontal 96°, Vertical 54° Bottom Lens: 6mm @ F1.6, Field of view: Diagonal 60°, Horizontal 52°, Vertical 28°
PT Angle	Top Lens: Pan: 220°, Tilt: 10° (manual adjustment for vertical angle) Bottom Lens: Pan: 324°, Tilt: 90°
Minimum Illumination	0.5 Lux @ (F1.6, AGC ON), 0 Lux with IR (* data is obtained from EZVIZ laboratories)
Lens Mount	M12
Day & Night	IR-cut filter with auto switch
DNR	3D DNR
WDR	Digital WDR
IR Night Vision	30 m (98 ft)
Color Night Vision	Up to 40 m (131 ft) when two lenses point in the same direction

Video & Audio

Max. Resolution	2K+ (2560 × 1440)
Frame Rate	Self-adaptive during network transmission
Video Compression	H.265 / H.264
H.265 Type	Main Profile
Video Bit Rate	Quad HD; Full HD; Standard adaptive bit rate
Audio Bit Rate	Self-adaptive

Network

Wi-Fi Standard	IEEE802.11b, 802.11g, 802.11n
Frequency Range	2.4 GHz ~ 2.4835 GHz
Channel Bandwidth	Support 20 MHz
Security	WPA-PSK / WPA2-PSK
Transmission Rate	11b: 11Mbps, 11g: 54Mbps, 11n: 150Mbps
Wi-Fi Pairing	AP pairing
Protocol	EZVIZ Cloud Proprietary Protocol
Interface Protocol	EZVIZ Cloud Proprietary Protocol
Wired Network	RJ45 × 1(10 M / 100 M adaptive Ethernet port)

Function

Smart Alarm	AI-Powered Human Shape Detection AI-Powered Vehicle Shape Detection Motion Detection
Auto Tracking	Supports
Customized Alert Area	Supports
Two-Way Talk	Supports
Preset Locations	Supports
General Function	Anti-Flicker, Dual-Stream, Heart Beat, Password Protection, Watermark

Specifications CS-H90-R100-8H44WKFL

Storage

Local Storage	Supports microSD card (max. 512 GB)
Cloud Storage	Supports EZVIZ CloudPlay storage (subscription required)

General

Operating Conditions	-30°C to 50°C (-22°F to 122 °F) Humidity 95% or less (non-condensing)
IP Grade	IP65 + 2h rainstorm
Power Supply	DC 12V / 1.5A
Power Consumption	Max. 18 W
Dimensions	224 × 135 × 136 mm (8.82 × 5.31 × 5.35 inch)
Packaging Dimensions	255 × 176 × 194 mm (10.04 × 6.93 × 7.64 inch)
Weight	Net weight: 723 g (25.51 oz) With package: 1203 g (42.43 oz)

In the box

- H90 Dual 2K+ Camera
- Power Adapter
- Drill Template
- Waterproof Kit
- Screw Kit
- Regulatory Information × 2
- Quick Start Guide

Certifications

CE / UL / WEEE / RoHS / REACH

Specifications are subject to change without notice. "🌈", "EZVIZ" and other trademarks and logos are the properties of EZVIZ in various jurisdictions.